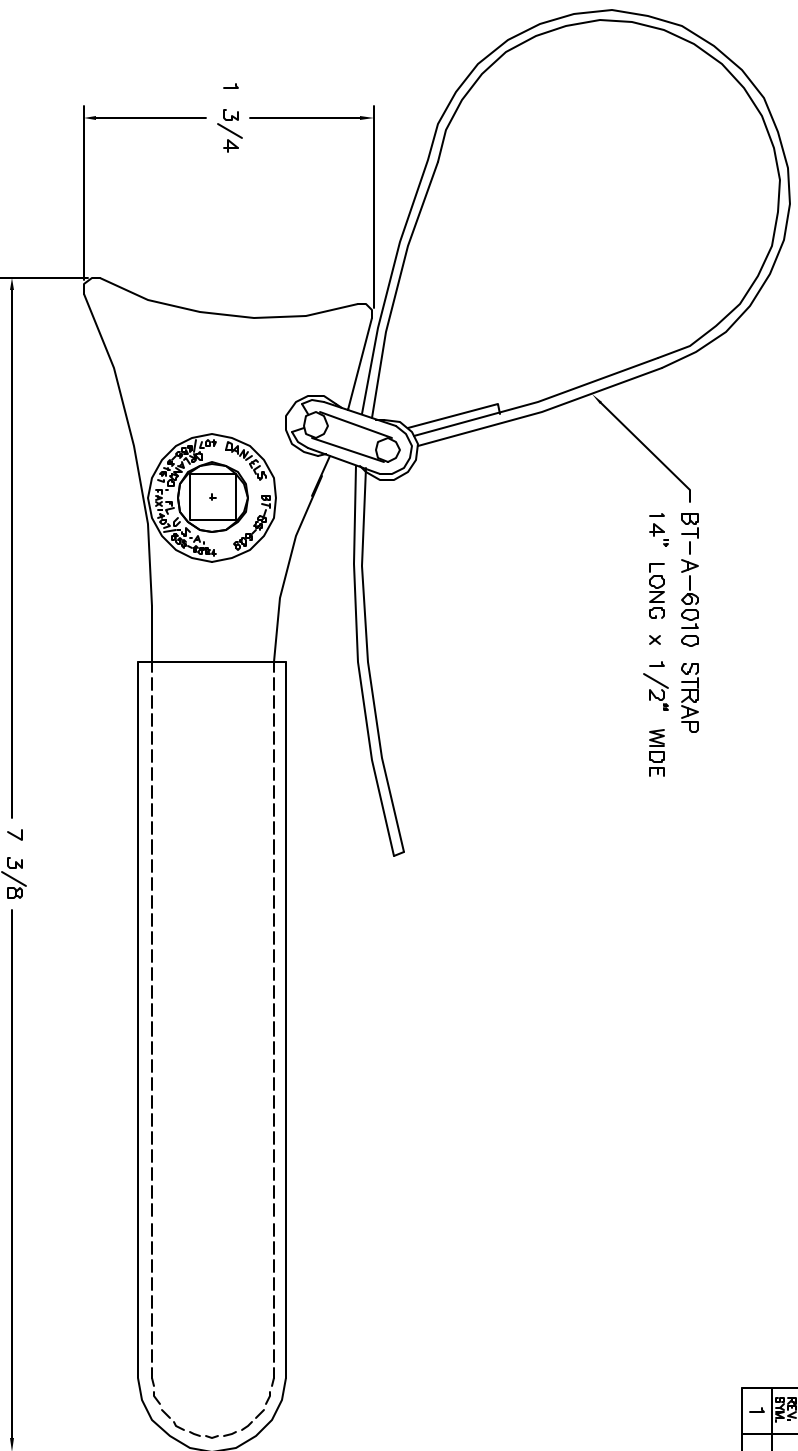


| REV. | EGD. NUMBER | DESCRIPTION | DATE | APPR. DATE |
|------|-------------|------------------|----------|------------|
| 1 | | ORIGINAL RELEASE | 12/17/98 | 12/17/98 |



**UNCONTROLLED DOCUMENT
WILL NOT BE UPDATED**

| | | | | | | | | | | | |
|--|--|------------|--|---|--|-------------------------------|--|---------------|--|---------------------|--|
| RESTRICTED & CONFIDENTIAL CONFIDENTIAL PROPERTY OF DANIELS MANUFACTURING CORP. NOT TO BE REPRODUCED OR TRANSMITTED IN ANY FORM OR BY ANY MEANS, ELECTRONIC OR MECHANICAL, INCLUDING PHOTOCOPYING, RECORDING, OR BY ANY INFORMATION STORAGE AND RETRIEVAL SYSTEM, WITHOUT PERMISSION IN WRITING BY DANIELS MANUFACTURING. ALL RIGHTS RESERVED. THIS DRAWING IS THE PROPERTY OF DANIELS MANUFACTURING CORP. AND IS TO BE RETURNED TO DANIELS MANUFACTURING CORP. UPON COMPLETION OF ORDER WHICH IDENT. WHICH IDENT. | | MATERIAL | | ITEM | | PART NO. | | QTY. | | DESCRIPTION/REMARKS | |
| HEAT TREAT | | FINISH | | DWN. J. JOYCE | | DATE 12/17/98 | | GARD. RRR | | DATE 12/17/98 | |
| APPR. DATE | | APPR. DATE | | NOTE: THIS DRAWING IS AN OUTLINE DRAWING OF THE RESPECTIVE DIMS PART NUMBER INDICATED. ACTUAL DIMS PART NUMBER IS DRAWING THE "-ENV" SUFFIX. | | WEIGHT LB/OZ | | SCALE | | DWG P/N | |
| DATE | | DATE | | TITLE | | STRAP WRENCH ENVELOPE DRAWING | | POSTING | | SHEET 1 OF 1 | |
| DATE | | DATE | | DANIELS MANUFACTURING CORP. ORLANDO, FLORIDA CASE 71891 | | BT-BS-609-ENV | | BT-BS-609-ENV | | REV 1 | |
| DATE | | DATE | | BT-BS-609-ENV | | BT-BS-609-ENV | | BT-BS-609-ENV | | REV 1 | |

DO NOT SCALE DRAWING